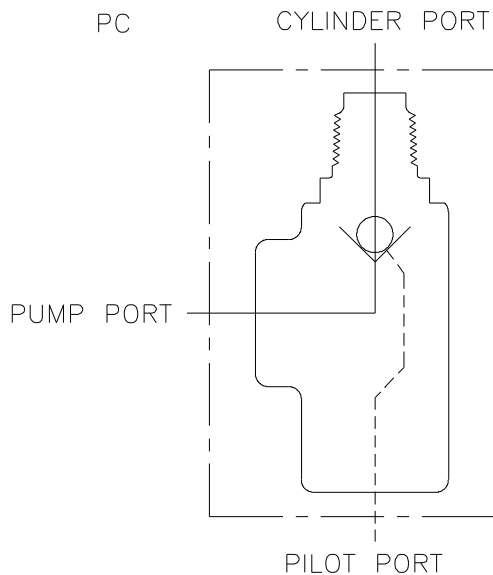


PILOT CHECK VALVE "PC"



PC37C



PC6C



FEATURES:

- **EVERY PC IS TESTED** for leakage.
- **OPTIONAL O-RING PORTS** to eliminate leakage.
- **STEEL BALL** will not jam, lock or seize and will always open.
- **DELTRIN CHECK SEAT** for zero leakage.

SPECIFICATIONS:

- **Pressure rating 3000 psi (207 bar).**
- **See creating a model code for flow capacity and port sizes.**
- **Weighs 0.7 lbs (0.3 kg).**
- **30 Micron Filtration Recommended.**

MATERIALS:

- **Cast Iron Body**
- **Buna N O'Rings**
- **Chrome Alloy Steel Ball**
- **Delrin Check Seat**

PC – GENERAL INFORMATION:

The Brand, pilot check valve is precision built, dependable and low priced. In one direction oil opens a check valve and passes through the valve and into a cylinder. As the check valve closes the oil is positively trapped in the cylinder with a check ball valve. Applying pilot pressure to the pilot port of this valve moves a piston stem against the ball to push the check ball off its seat thus allowing the oil to leave the cylinder. The PC is intended to be a positive safety check, it is not intended to be a metering or counter balance valve. The pilot piston ratio is 4 to 1, this means that it only requires 1/4 as much pressure on the pilot piston as is being trapped in the cylinder by the check ball.

PC – EXAMPLES OF COMMON MODEL CODES:

PC37C..... Pilot operated check valve, rated for 0-8 gpm, 3/8” NPT inlet/outlet port, and 1/4” NPT pilot port.

PC50C..... Pilot operated check valve, rated for 0-16 gpm, 1/2” NPT inlet/outlet port, and 1/4” NPT pilot port.

PC6C..... Pilot operated check valve, rated for 0-8 gpm, #6 SAE all ports.

PC8C..... Pilot operated check valve, rated for 0-16 gpm, #8 SAE inlet/outlet port, and #6 SAE pilot port.

Note: Also available with steel check seat, add -S to model code, as per example: PC50C-S

DIMENSIONAL DATA:

